



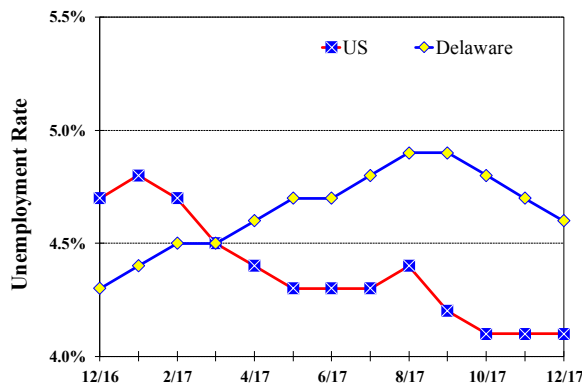
Patrice Gilliam-Johnson, Ph.D., Secretary

Monthly Labor Review

December 2017

Unemployment Rate

Delaware and US
December 2016 - December 2017



Monthly Commentary

In 2016, Delaware began the year with moderate job growth (about 1.5 percent), which then petered out towards the end of the year, leaving the state with a net 350 new jobs (less than 0.1 percent) created by year's end. 2017 is looking very much the same, with early tepid growth (about half that of early 2016) fading to what now looks like a slight net loss for the year. (Complete payroll records won't be available for several more months. They could change the current business survey estimate of a small loss in jobs for 2017 to a small gain, but they are not likely to change the overall picture much.)

Delaware Civilian Labor Force

	Dec. 2017	Nov. 2017	Dec. 2016
Civilian Labor Force	475,500	476,800	470,100
Employment	453,700	454,600	449,700
Unemployment	21,800	22,200	20,400
Unemployment Rate %	4.6	4.7	4.3
US Unemployment Rate %	4.1	4.1	4.7

Source: Delaware Dept. of Labor in cooperation with the US Dept. of Labor, Bureau of Labor Statistics.

Area Unemployment Rates (%)

	Dec. 2017	Nov. 2017	Dec. 2016
New Castle County	3.8	3.9	3.6
Wilmington	5.6	5.7	5.3
Newark	3.3	4.0	3.8
Kent County	4.2	4.3	4.0
Dover	5.2	5.5	5.1
Sussex County	4.8	4.5	4.4

Note: Area rates are not seasonally adjusted.

Source: Delaware Dept. of Labor in cooperation with the US Dept. of Labor, Bureau of Labor Statistics.

The nation and our neighboring states are not experiencing the same job market. US job growth has remained at about 1.5 percent for the past two years. Maryland has seen an uptick in growth to over two percent. Pennsylvania has gone from just under one percent growth to slightly over that, while New Jersey has done the opposite. In Delaware, two bellwether industries are among the biggest job losers – Temporary Help and Restaurants are down a combined 2,700 jobs over the year. They will turn around quickly when stronger job growth returns.



Office of Occupational and Labor Market Information
For data questions, contact: George Sharpley, Ph.D. (302) 761-8060

Delaware Labor Force Trends

Delaware's seasonally adjusted unemployment rate in December 2017 was 4.6%, down from 4.7% in November 2017. There were 21,800 unemployed Delawareans in December 2017 compared to 20,400 in December 2016. The US unemployment rate was 4.1% in December 2017, unchanged from November 2017. In December 2016 the US unemployment rate was 4.7%, while Delaware's rate was 4.3%.

In December 2017, seasonally adjusted nonfarm employment was 453,800, unchanged from November 2017. Since December 2016, Delaware's total nonfarm jobs have decreased by a net loss of -200, a decline of 0.0%. Nationally, jobs during that period increased 1.5%.

Delaware Nonfarm Employment

Seasonally Adjusted (in 000s)

INDUSTRY GROUP	Dec. 2017	Nov. 2017	Over the Month Change	Over the Year Change†
TOTAL NONAG. EMP.	453.8	453.8	0.0	-0.2
CONSTRUCTION	21.1	20.8	0.3	0.5
MANUFACTURING	26.0	25.9	0.1	0.3
Durable Goods *	9.5	9.5	0.0	0.1
Nondurable Goods	16.6	16.4	0.2	0.2
TRADE, TRANSP., & UTIL.	79.7	80.0	-0.3	-2.5
Wholesale Trade	11.6	11.7	-0.1	-0.4
Retail Trade	51.8	52.0	-0.2	-1.0
Transp. & Utilities	16.3	16.3	0.0	-1.1
INFORMATION *	4.7	4.7	0.0	-0.1
FINANCIAL ACTIVITIES	48.0	47.9	0.1	1.2
PROF. & BUS. SERVICES	60.6	61.8	-1.2	-0.1
EDUCATION & HEALTH	79.7	79.8	-0.1	1.6
LEISURE & HOSPITALITY	50.3	49.8	0.5	-0.9
OTHER SERVICES	18.4	18.1	0.3	-0.4
GOVERNMENT	65.3	65.0	0.3	0.2
Federal Government *	5.9	5.8	0.1	0.0
State Government	32.0	31.8	0.2	0.0
Local Government	27.5	27.4	0.1	0.2

* Industries are not seasonally adjusted.

† Annual changes are not seasonally adjusted.

Details may not add up due to rounding and seasonal adjustment.

Source: US Department of Labor, Bureau of Labor Statistics.

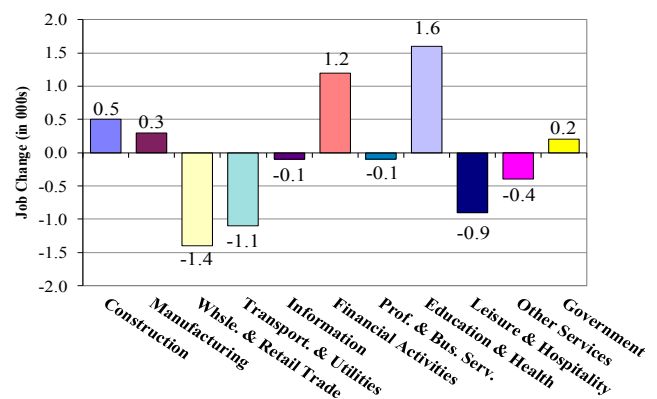
Office of Occupational and Labor Market Information

For data questions, contact:

George Sharpley, Ph.D.
(302) 761-8060



Delaware Over-The-Year Job Change December 2016—December 2017



Consumer Price Index

All Urban Consumers

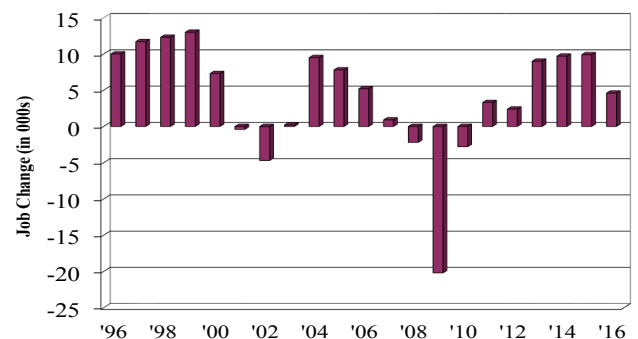
	Percent Change to Dec. 2017 from:		
	Nov. 2017	Oct. 2017	Dec. 2016
US City Average	-0.1	-0.1	2.1
Phila.-Wilm.-Atlantic City*	NA	-0.1	0.8

* Data are published on a bi-monthly basis.

Delaware Annual Net Job Change

Annual Average

1996—2016



<https://lmi.delawareworks.com>